

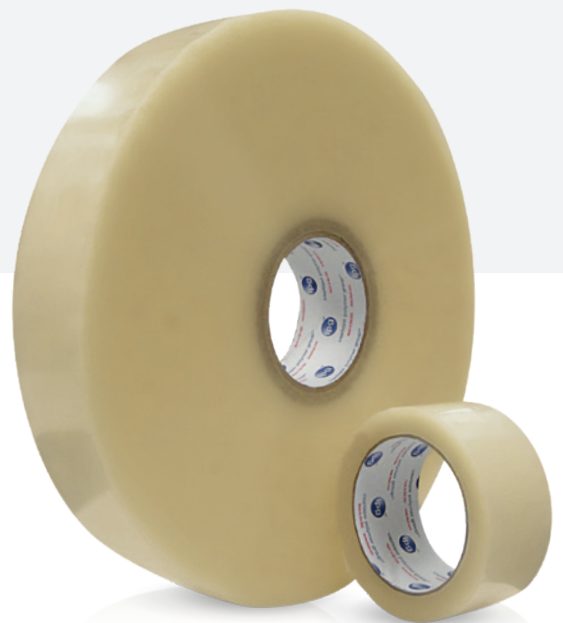


HOT MELT

CARTON SEALING TAPES

WITH CORRU-GRIP™ ADHESIVE TECHNOLOGY

According to recent studies, more than 90% of boxes contain recycled content. Changes in the fiber and composition of your cartons may impact the ability of your tape to adhere to it. IPG®'s line of hot melt carton sealing tapes that feature Corru-Grip™ Adhesive Technology includes 7205, 8100, 9100, and 1100. All are designed to stick to every carton – especially recycled corrugate.



FEATURES & BENEFITS

- Ground-breaking adhesive formulation, developed specifically for optimal closure of high percent content recycled corrugate
- Expanded application temperature and humidity range, unique for a hot melt product, provides superior closure:
 - Down to 35°F and 25% relative humidity
 - At room temperature, 72°F and 50% relative humidity
 - At 105°F and 75% relative humidity
 - Ultimately up to 120°F
- Confidently and successfully seals boxes in more environmental conditions than any other product in its class
- Manufactured entirely and exclusively in the USA - your guarantee of quality and consistency

Carton sealing tapes with IPG®'s

RECYCLED CORRUGATE FRIENDLY



ADHESIVE TECHNOLOGY

ARE PROVEN

to pull more corrugate fibers than other products in its class.



IPG®

Other Brand



©2024 IPG® • Corru-Grip • 061024



NOMINAL VALUES

CHARACTERISTICS	1100	9100	8100	7205
Total Thickness ASTM D-3652	3.0 mil (0.076mm)	2.5 mil (0.064mm)	2.2 mil (0.056mm)	2.05 mil (0.052mm)
Backing	2.0 mil (0.05 mm) Cast Film	1.6 mil (0.041 mm) Cast Film	1.4 mil (0.36 mm) Cast Film	1.2 mil (0.030 mm) Cast Film
Adhesive	Synthetic Rubber/Resin	Synthetic Rubber/Resin	Synthetic Rubber/Resin	Synthetic Rubber/Resin
Adhesion to Steel ASTM D-3330	46 oz/in of width (50.3 N/100mm)	44 oz/in of width (48.2 N/100mm)	42 oz/in of width (46.0 N/100mm)	42 oz/in of width (46.0 N/100mm)
Tensile Strength ASTM D-3759	32 lbf/in of width (560 N/100mm)	30 lbf/in of width (525 N/100mm)	26 lbf/in of width (455 N/100mm)	24 lbf/in of width (420 N/100mm)
Shear to Linerboard 1/2" x 1/2" x 1000 grams ASTM D-3654	40,000+ minutes	30,000+ minutes	22,000+ minutes	14,000+ minutes
Elongation % at Break ASTM D-3759	150%	140%	135%	130%
Colors	Clear, Tan	Clear, Tan	Clear, Tan	Clear

1100 3 MIL PREMIUM

PRODUCT NO.	WIDTH (mm)	LENGTH (mm)	COLOR	ROLLS/CASE	CASES/PALLET
F4210	48	55	Clear	36	60
F5210	48	55	Tan	36	60
F4225	72	55	Clear	24	60
F5225	72	55	Tan	24	60
F4139	48	100	Clear	36	48
F4066	72	100	Clear	24	48
F4220	48	914	Clear	6	36
F4240	72	914	Clear	4	36

9100 2.5 MIL PREMIUM

PRODUCT NO.	WIDTH (mm)	LENGTH (mm)	COLOR	ROLLS/CASE	CASES/PALLET
F4185	48	55	Clear	36	60
F5185	48	55	Tan	36	60
F4200	72	55	Clear	24	60
F5200	72	55	Tan	24	60
F1192	48	100	Clear	36	48
F4202	72	100	Clear	24	48
F4195	48	914	Clear	6	48
F4208	72	914	Clear	4	48
F5205	72	914	Tan	4	48

8100 2.2 MIL MEDIUM

PRODUCT NO.	WIDTH (mm)	LENGTH (mm)	COLOR	ROLLS/CASE	CASES/PALLET
F4140	48	50	Clear	36	72
F4150	48	100	Clear	36	48
F4166	72	100	Clear	24	48
F4155	48	914	Clear	6	48
F4160	48	1371	Clear	6	36
F4170	72	914	Clear	4	48
F4171	72	1371	Clear	4	36

7205 2.05 MIL MEDIUM

PRODUCT NO.	WIDTH (mm)	LENGTH (mm)	COLOR	ROLLS/CASE	CASES/PALLET
F4543	48	100	Clear	36	48
F4544	72	100	Clear	24	48
F4545	48	914	Clear	6	48
F4546	72	914	Clear	4	48



Scan for more info or visit itape.com/hotmelt

